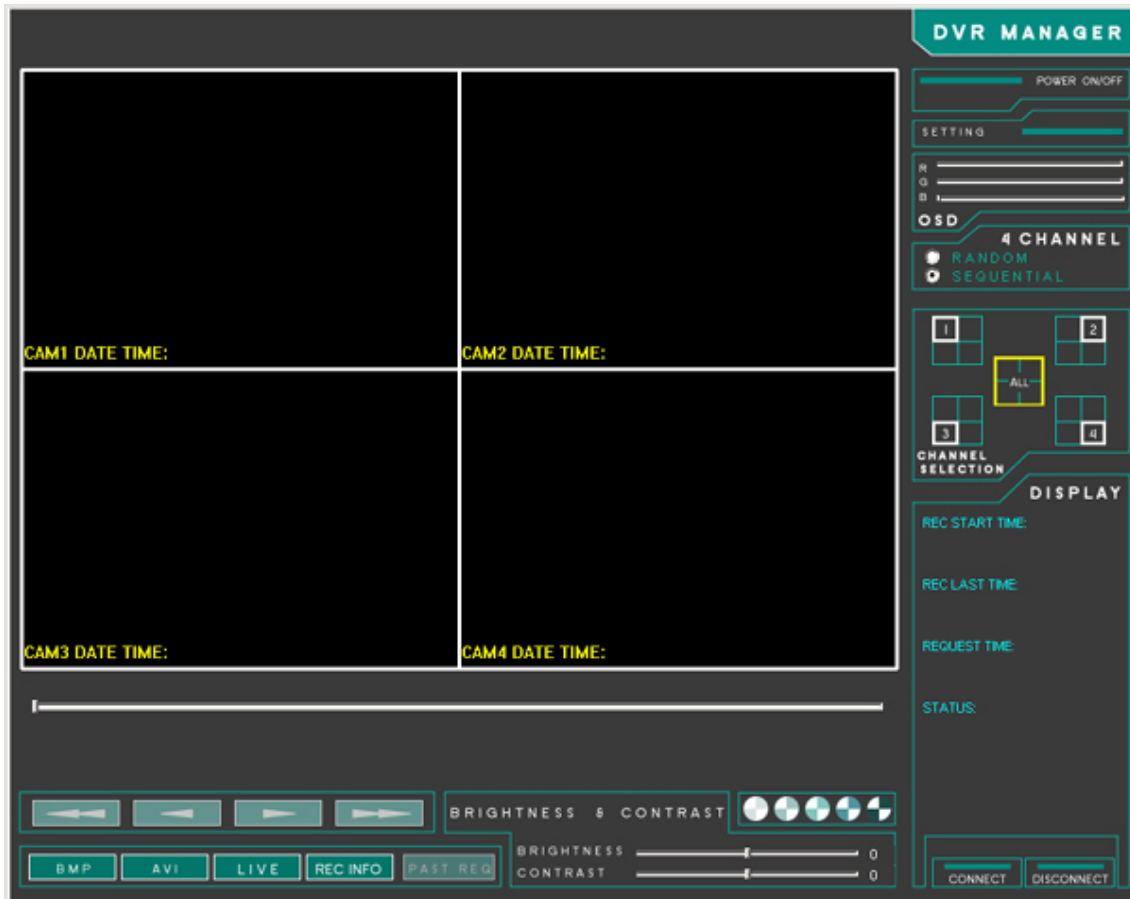


# DVR MANAGER – REMOTE VIEWING SOFTWARE



## Operating Manual

The picture, diagram and function might differ according to the specifications.

©1997-2004

Contents of this user manual are protected under copyrights and computer program laws.

Thank You

Before operating the system, please read this Operating Manual thoroughly and retain it for future reference.

**Contents:**

<b>1. INTRODUCTION</b>	<b>3</b>
1.1 WHAT IS DVR MANAGER?	3
1.2 MAIN VIEWER PAGE	3
<b>2. INSTALLATION</b>	<b>3</b>
2.1 INSTALLING SOFTWARE	3
2.2 BUTTON DESCRIPTION	3
<b>3. CONNECTION &amp; OPERATION</b>	<b>3</b>
3.1 CONNECTION & SETTING	3
3.1.1 RS232C CONNECTION	3
3.1.2 TCP/IP CONNECTION	3
3.2 LIVE PLAYBACK	3
3.3 CHANNEL SELECTION	3
3.4 PAST PLAYBACK	3
<b>4. SAVE</b>	<b>3</b>
4.1 BMP FILE SAVE	3
4.2 AVI FILE SAVE	3
<b>5. MISCELLANEOUS FUNCTION</b>	<b>3</b>
5.1 BRIGHTNESS AND CONTRAST	3
5.2 OSD COLOR CHANGE	3

# 1. Introduction

## 1.1 What is DVR Manager?

Main use of DVR Manager is to view images across the network. DVR Manager works through the TCP/IP connection. If the DVR is connected with Ethernet and you know your IP address, then you will be able to see the images from anywhere. And also, you can view images from the DVR which images saved in the HDD.

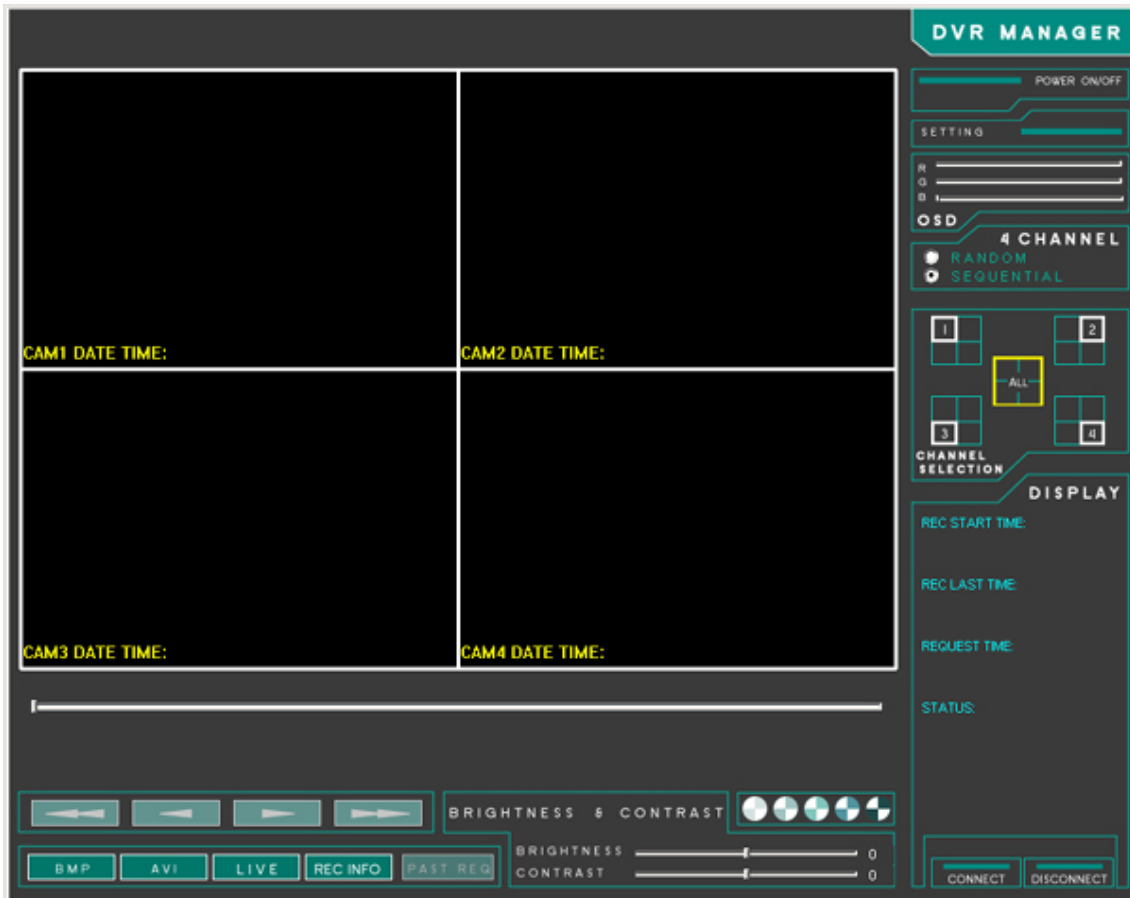
And DVR Manager can bring the images directly from DVR and save them in BMP or AVI file format.

You can use apply both static IP and dynamic IP to use DVR Manager. We also developed DHCP function to make you easier to use when you are utilizing with dynamic IP. DHCP function is to retrieve the IP address automatically.

DVR Manager has many additional functions. Please read the manual carefully before you use.

**Note** In order to use DVR Manager program and to view images across the network, DVR must have a network board and must connected to the network. Please read DVR User Manual to connect to the network.

## 1.2 Main Viewer Page

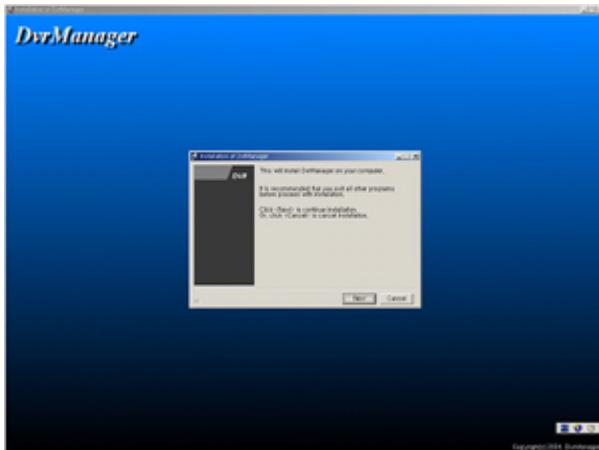


## 2. Installation

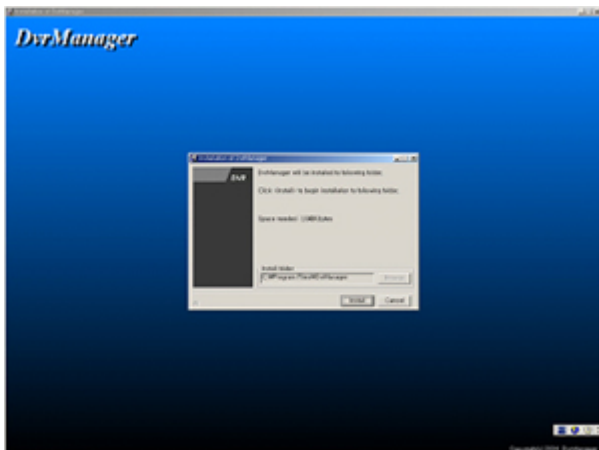
### 2.1 Installing Software

You will find an installation CD from DVR. Please select and run 'SetupDvrManager.exe' and follow the below instruction.

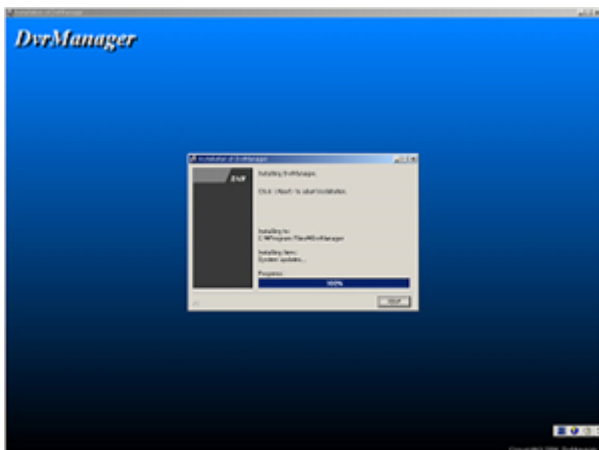
1. Run the 'SetupDvrManager.exe' file.



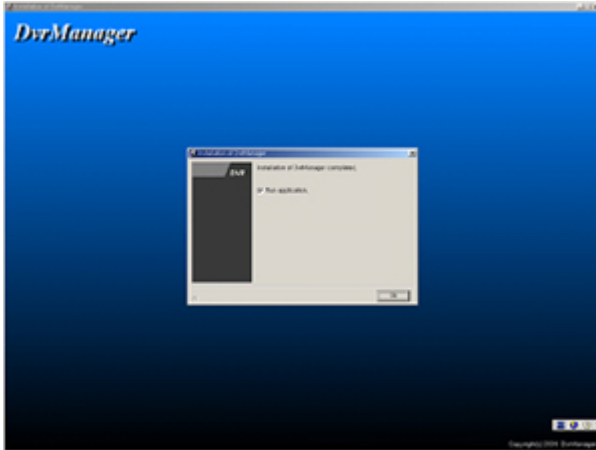
2. Click on 'NEXT' button to continue the installation and to cancel the installation, click the 'CANCEL' button.



3. Please select the install folder and click 'INSTALL' to continue the installation.



4. To abort the installation, click the 'ABORT' button.
5. To run the software, click OK button. If you do not wish to run the software, uncheck the box and click the OK button to finalize the installation of software.



## 2.2 Button Description

Below is the main frame of the software.

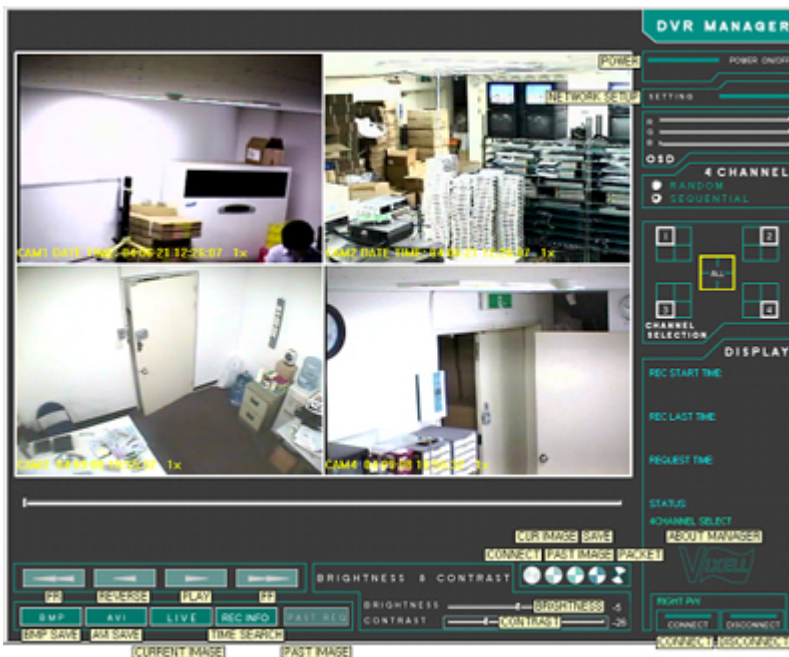
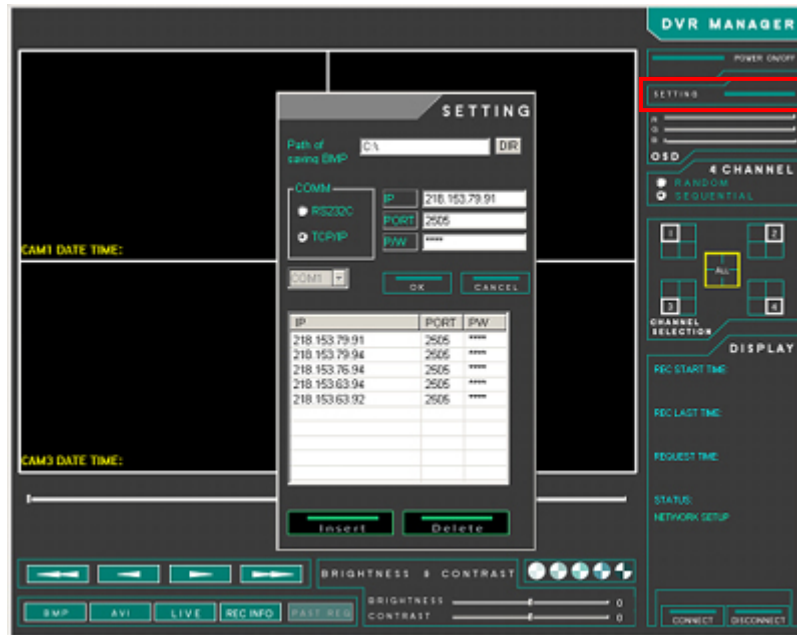


Figure 1(Program and Controlling Buttons)

## 3. Connection & Operation

### 3.1 Connection & Setting

To connect with the DVR, you will need to put IP address, port number and password. Click the 'SETTING' button in red box, then 'SETTING' window will appear in the middle of the program as below.

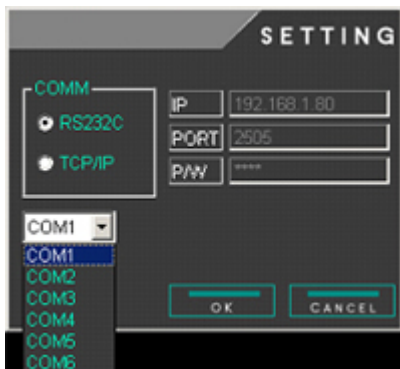


#### 3.1.1 RS232C Connection

Only use this option when you connect RS-232C cable between DVR and your PC. Connect the RS-232C cable between the DVR and PC. And select the COM port number. And click OK.

The program will bring the images through RS-232C cable.

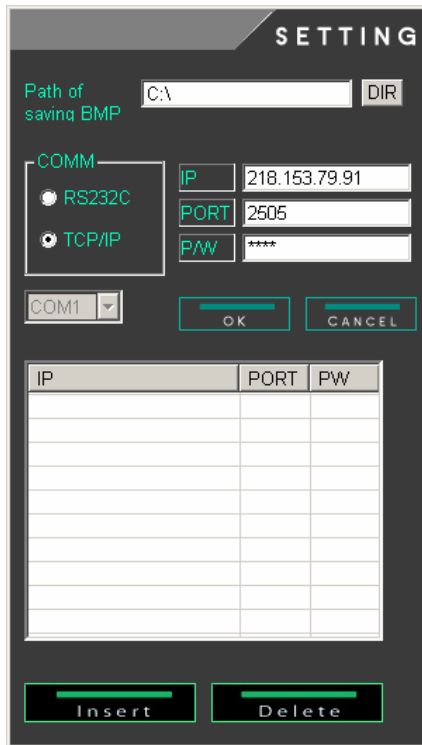
The RS-232C cable that we provided with the DVR is direct cable. In case of any damage on the cable, please replace it with DIRECT RS-232C cable.



### 3.1.2 TCP/IP Connection

#### Single Connection

To use this option, the DVR must have the network board and connect with network. To verify whether the DVR has the network card, you can check it from the system information. And follow the network setup on DVR Operating Manual before you use.



Put Domain Name or IP address. Domain Name is the one that has been registered during the Name IP registration. (See more detail on DVR operating manual)

And put the Port number that you set in DVR's menu, 'IP SETUP'.

And if you set the 4 digit basic password from DVR, you need to put same password in order to use the network program. If you have not set up the password or if the unit is in default mode, then you do not need to put password.

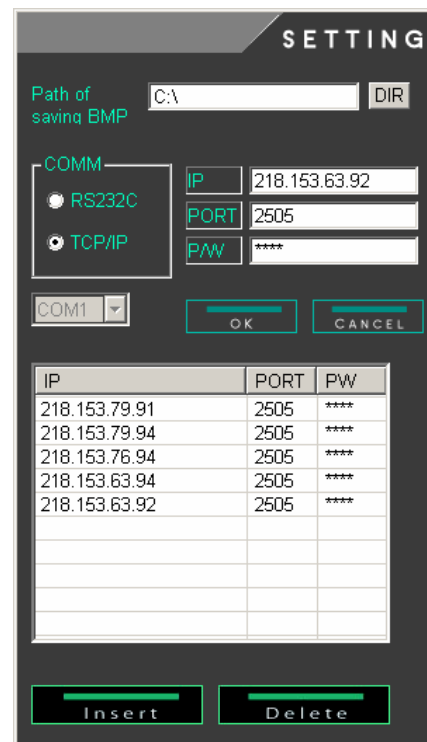
Click OK to finalize the network setting.

#### Multi Connection

With DVR Manage, the user can view and save the images from up to 10 different DVRs.

Type the IP address or Domain Name, Port number and password and click insert on the below of the screen. You will see that the information is being stored on the list.

And to see the images from the DVR, select the IP address for the DVR and double click the information. And then, you can see the images from the DVR.



### 3.2 Live Playback

When you finish the setting, click CONNECT button and the program will bring the images that currently records on DVR. You can control with the below buttons.

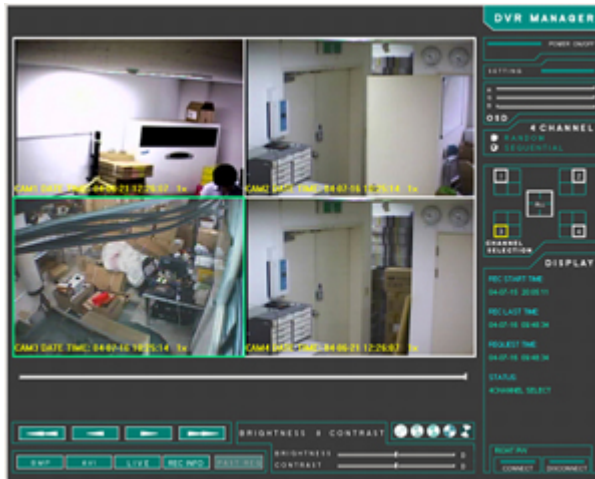


1. **REWIND:** This button is to rewind the image. The maximum speed is 65,536 times and the speed will be increased twice faster each time when you click the button. (2X ▶ 4X ▶ 8X)
2. **BACKWARD PLAY:** Press this button to play backward.
3. **PLAY:** Press this button to play forward.
4. **FAST FORWARD:** The maximum speed for fast forward is 65,536 times, and same as 'Rewind' button and the speed will be increased twice faster each time when you click the button. Press 'Play' button to go back to normal speed. (2X ▶ 4X ▶ 8X)

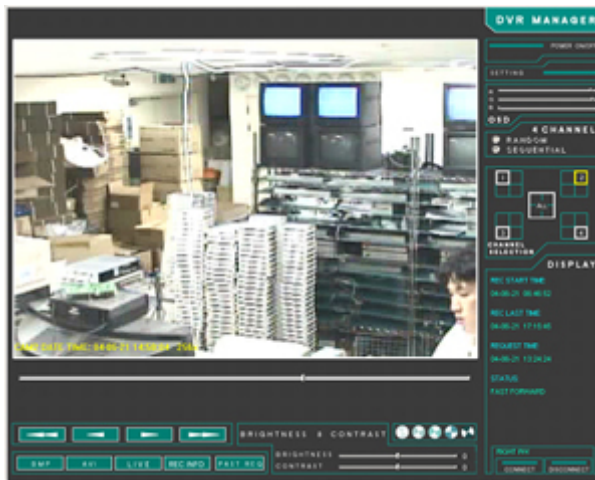


### 3.3 Channel Selection

To watch one channel, click the desired channel image or click the channel selection button on left side of the program. When you select the channel, you will see the green border around selected channel. Other three unselected channels will be remaining paused. A selected channel viewing speed will be faster than normal speed, more like real-time playback speed.



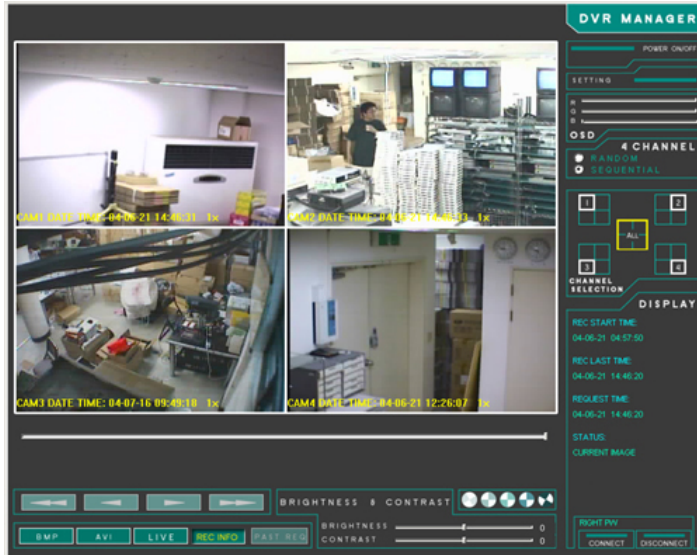
If you want to enlarge the image, double click the desired channel image.



### 3.4 Past Playback

In order to see the past recorded material, the software needs to be in past playback mode. Please follow the below instruction to view past images.

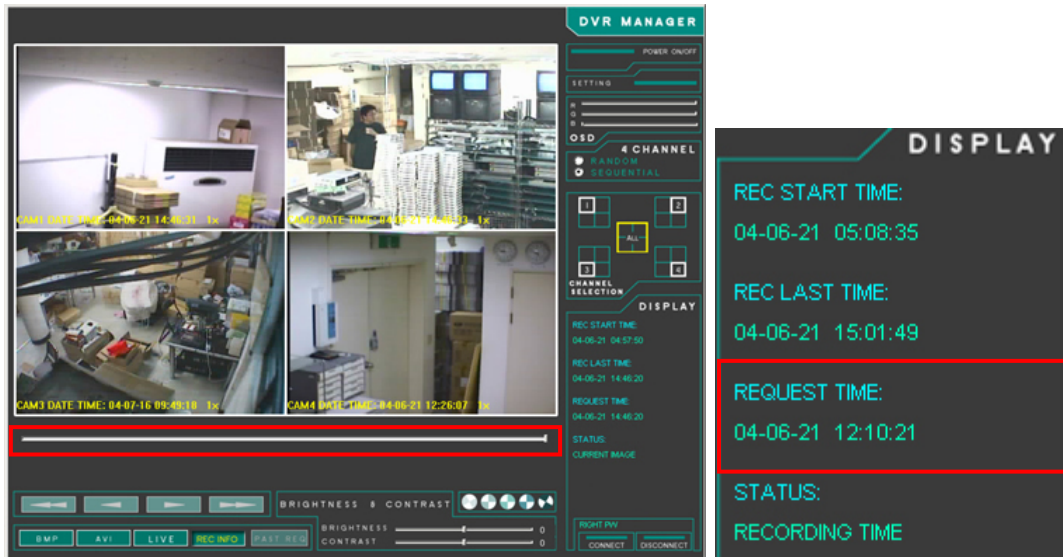
1. Click the REC INFO button.



When you click the REC INFO button, you can see additional information of the images on the right side. Additional information is 'RECORD START TIME', 'RECORD LAST TIME' AND 'REQUEST TIME'.

And when you click the REC INFO button, at the moment given transmitting images will be stopped.

2. Move the bar and select the time that you want be to played. You can check the time on 'REQUEST TIME'.



3. When you have set the time that you wish to play, click the PAST REQ button. The program will bring the images which have been recorded on selected time.



You can control the speed the playback direction with four controlling buttons. These buttons functions exactly same control as normal VCR.



1. **REWIND:** This button is to rewind the image. The maximum speed is 65,536 times and the speed will be increased twice faster each time when you click the button. (2X ► 4X ► 8X)

2. **BACKWARD PLAY:** Press this button to play backward.

3. **PLAY:** Press this button to play forward.

4. **FAST FORWARD:** The maximum speed is 65,536 times as like 'Rewind' button and the speed will be increased twice faster each time when you click the button. Press 'Play' button to go back to normal speed. (2X ► 4X ► 8X)

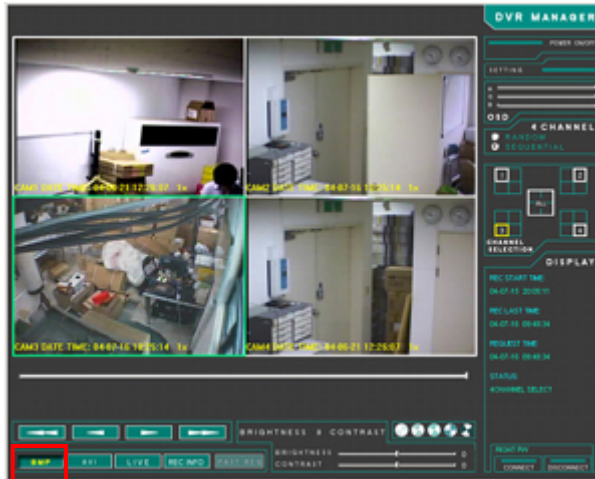
**Caution**

If you don't select 'REQUEST TIME' or click 'PAST REQ' button after clicking 'REC INFO' button for a long time, the program will automatically disconnect from the network.

## 4. Save

### 4.1 BMP File Save

To save the image in BMP file format, select a channel and click BMP button on the left corner of the program.



Once you click the BMP button, the program will save every frame in BMP file format until you click the button again. The BMP files will be saved in a selected folder. You can set the directory of BMP saving files in SETTING menu of the program. Click the DIR button and select the folder.



SETTING window



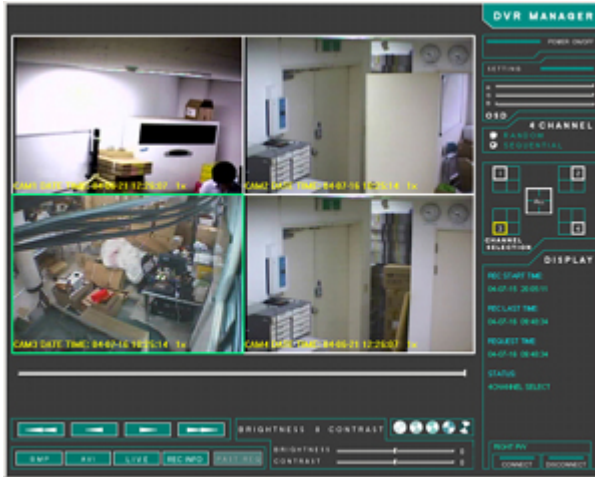
Above image is an example of saved BMP file.

#### **Caution**

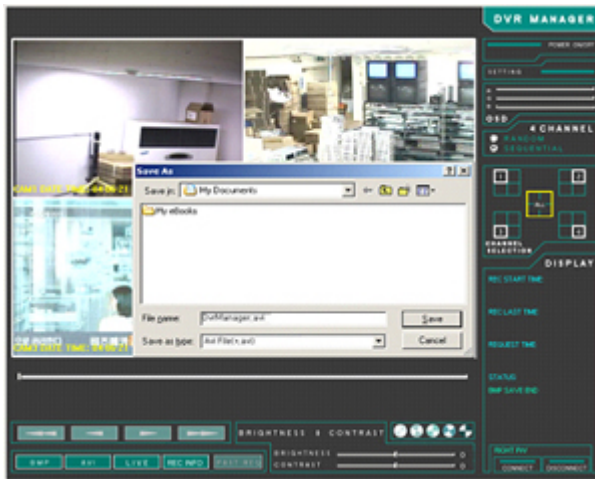
If you click the BMP button, then the program will continue saving the images. Please make sure that when you have finished the saving, click the BMP button again to stop the saving.

## 4.2 AVI File Save

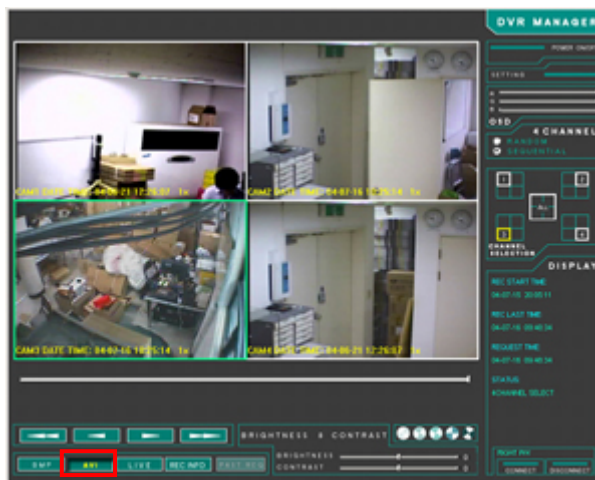
1. Select the channel that you want to save. You can save all four channels but it will not be saved in QUAD format. If you select and save four channels at the same time, the program will save the images sequentially.



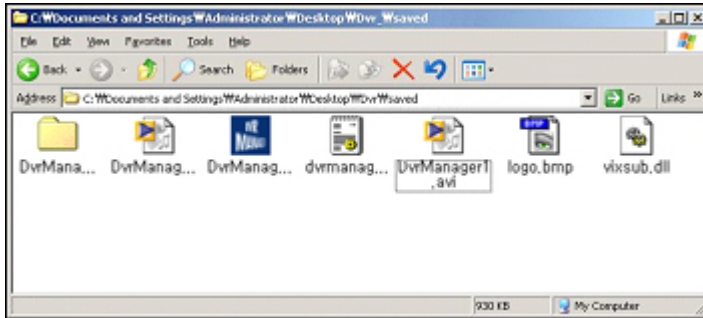
2. Click the AVI button. And select the file name and location. Default file name is 'DvrManager.avi'.



3. Click the SAVE button and it will start saving in AVI file format.



4. When you want to stop saving, click the AVI button and it will stop the saving. And the file will be in a folder that you selected.



## 5. Miscellaneous Function

### 5.1 Brightness and Contrast

You can adjust the brightness and contrast of the images. Move the bar and check the changes.



### 5.2 OSD Color Change

You can change the OSD color by dragging three bars, located on top right corner of the program.

